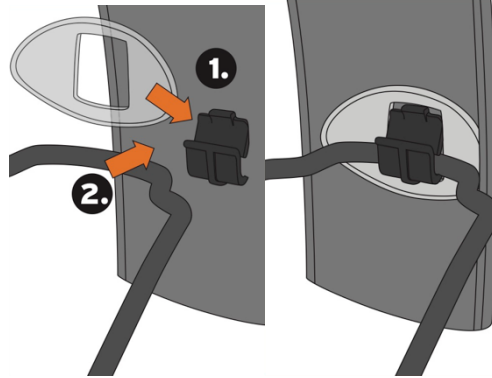
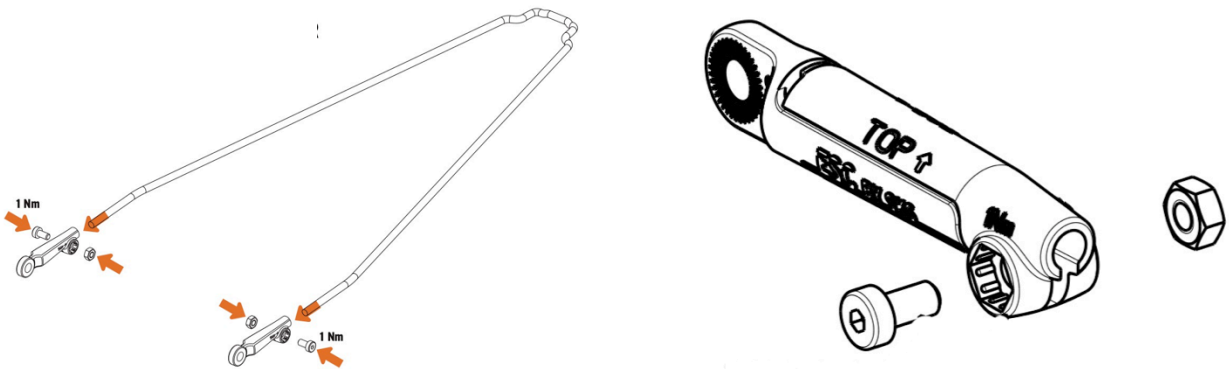


DE-FENDER INSTALLATION INSTRUCTIONS

- 1) Any fender reduces the tire clearance, so adjust your tire choice accordingly when riding with a fender. Clearance of at least 10-15mm is necessary as per the safety requirements from SKS. Clearance of less than 10mm has to be avoided under any circumstance (risk of accident!).
- 2) Install the front and rear wheels with our standard X-12 thru axles. Tighten as usual.
- 3) Install the stays on the front & rear fender blades:



- 4) Install the break-away safety brackets on front & rear fender stays so that the TOP ↑ marker points up on the left and right side for both fenders:



- 5) Tighten the bolts of the break-away safety brackets lightly.
- 6) Attach the front fender to the underside of the fork crown.
- 7) Attach the front fender stays to the fork as follows:
 - a. Insert the fender mini-axle through the left break-away bracket.
 - b. Add one plastic spacer on the mini axle.
 - c. Insert the mini-axle through the inside of the X-12 thru axle. The plastic spacer is thus placed in-between the break-away safety bracket and the fork dropout.
 - d. On the other side of the fork, as the mini-axle exits, place one plastic spacer on the mini-axle followed by the right break-away safety bracket.
 - e. Thread the mini-axle nut on the mini axle end and tighten.

- f. Adjust the length of the fender stays in the break-away safety brackets so that the clearance between fender blade and the tire is at least 10-15mm as per the requirement from SKS. A clearance of less than 10mm has to be avoided under any circumstances (risk of accident!). Secure fender stays in the break-away safety brackets with 1Nm torque.
- 8) Attach the L-bracket of the rear fender to the underside of the seatstay monostay. Keep the bolt loose so the fender can slide. Note: For size XS, the tip of the L-bracket needs to be bent to a 60 degree angle to fit inside the seatstay/seattube corner.
- 9) Attach the rear fender to the frame near the bottom bracket. Note that there are two fender sizes (S/M and L/XL) and each of these has two holes near the BB end. Use the following size and hole depending on your frame size:
- | | |
|-----------|---|
| XS frame: | Use S/M fender and upper hole at the BB side of the fender |
| S frame: | Use S/M fender and upper hole at the BB side of the fender |
| M frame: | Use S/M fender and lower hole at the BB side of the fender |
| L frame: | Use XL/L fender and lower hole at the BB side of the fender |
| XL frame: | Use XL/L fender and lower hole at the BB side of the fender |
- Note: The L-bracket may need to be bent slightly to position the fender correctly relative to the bottom bracket attachment thread.
- 10) Attach the rear fender stays to the rear dropout area as follows:
- Insert the fender mini-axle through the left break-away bracket.
 - Add one plastic spacer on the mini axle.
 - Insert the mini-axle through the inside of the X-12 thru axle. The plastic spacer is thus placed in-between the break-away safety bracket and the fork dropout.
 - On the other side of the fork, as the mini-axle exits, place one plastic spacer on the mini-axle followed by the right break-away safety bracket.
 - Thread the mini-axle nut on the mini axle end and tighten.
 - Adjust the length of the fender stays in the break-away safety brackets so that the clearance between fender blade and the tire is at least 10-15mm as per the requirement from SKS. A clearance of less than 10mm has to be avoided under any circumstances (risk of accident!). Secure fender stays in the break-away safety brackets with 1Nm torque.
- 11) Tighten the L-bracket at the seatstay monostay and adjust the length of the fender stays in the security break-away attachments so that the clearance between fender blade and the tire is 10-15mm as per the safety requirements from SKS. A clearance of less than 10mm has to be avoided under any circumstances (risk of accident!).
- 12) Never use a tire with a tread that picks up stones or other debris that may get stuck between tire and fender (risk of accident!).

